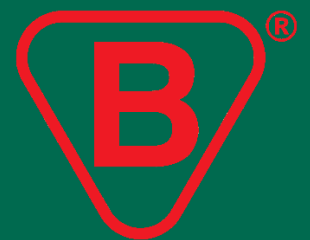




# MODULAR SCAFFOLDING FOX



# OLAN – YOUR RELIABLE SCAFFOLDING SUPPLIER

## 2006

Founded by a synergy of Polish, Lithuanian and Norwegian entrepreneurs, we were focused on providing high quality scaffolding to local and foreign markets right from the beginning

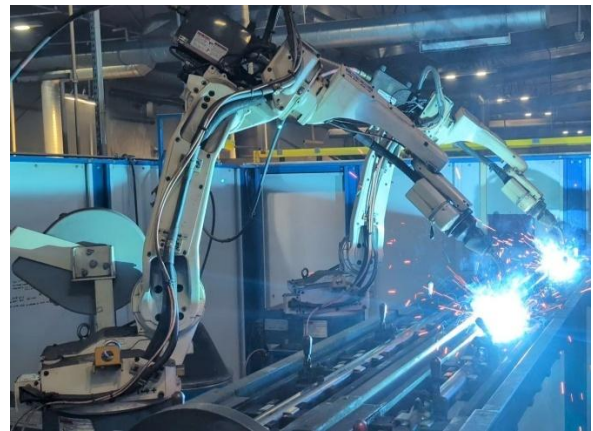


## 2012

OLAN moved to a newly built manufacturing facility in Żabokliki, Siedlce in Poland. Integration of new profiling, welding and assembly technologies allowed us to reach new heights

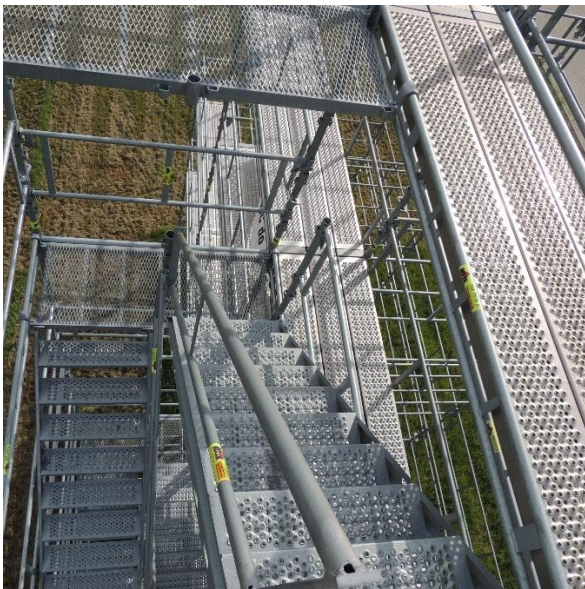
## TODAY

We offer three scaffolding systems that are produced in both steel and aluminium. These are modular scaffolding R+, façade scaffolding EURO+ and Scandinavian type FOX. In addition, we supply temporary roofs, formwork and supporting modular towers, as well as temporary stand systems and masts



# MODULAR SCAFFOLDING FOX

Our modular scaffolding FOX is fully designed and manufactured in-house at OLAN, ensuring complete quality control at every stage. The system has proven to be a reliable and versatile solution for construction, industrial, on-shore and off-shore applications. It is certified according to EN-12810 and EN-12811 standards.



To guarantee top performance, we invest heavily in prototyping and testing, using only premium-grade steel materials. Precision manufacturing with CNC technology ensures exact dimensional accuracy, while EN 1090-certified welding provides superior structural integrity.

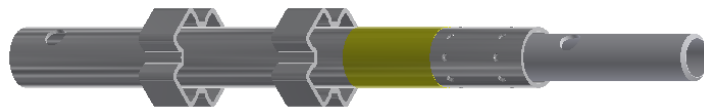
All components are hot-dip galvanized by our long-term trusted partners, protecting the system from corrosion and environmental wear. The result is a scaffolding system built for maximum durability, safety, and decades of dependable use.



## STEEL STANDARD SH

Basic load-bearing scaffolding component. Made of 48.3 pipe with welded cassettes on the same level.

Article Nr.	Dimensions (m)	Weight (kg)
RNS-04050	0,50	3,1
RNS-04100	1,00	5,5
RNS-04150	1,50	8,0
RNS-04200	2,00	10,5
RNS-04300	3,00	15,0



## STEEL STANDARD SB

Standard with an additional bayonet for additional safety or hanging scaffolding. Cassettes for hooks are welded on different levels.

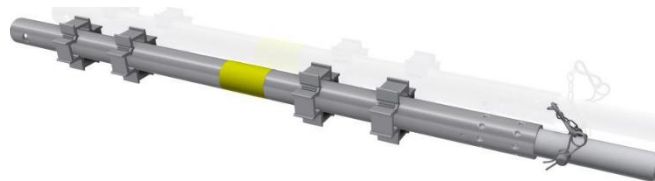
Article Nr.	Dimensions (m)	Weight (kg)
RNS-04015	0,50	4,1
RNS-04014	1,00	7,0
RNS-04013	1,50	10,1
RNS-04012	2,00	13,1
RNS-04011	3,00	15,9



## ALUMINIUM STANDARD SH

Aluminium version of the standard. Being almost twice lighter, there is no compromise on robustness.

Article Nr.	Dimensions (m)	Weight (kg)
RNA-04050	0,50	1,9
RNA-04100	1,00	3,3
RNA-04150	1,50	4,7
RNA-04200	2,00	6,1
RNA-04300	3,00	8,9



## ALUMINIUM STANDARD SB

In contrast to a steel version, aluminium cassettes are welded on the same level.

Article Nr.	Dimensions (m)	Weight (kg)
RNA-03050	0,50	2,2
RNA-03100	1,00	3,6
RNA-03150	1,50	5,0
RNA-03200	2,00	6,4
RNA-03300	3,00	9,2



## SECURITY PIN WITH CHAIN

Security pin with additional protection.



Article Nr.	Dimensions (m)	Weight (kg)
RNA-03000.4	Fi16	0,2

## SECURITY PIN

Standard element to be used to connect two standards to each other.



Article Nr.	Dimensions (m)	Weight (kg)
RFS-00011	-	0,1

## BASE JACK

Base jack on 150x150mm foot with threaded pipe and nut.

Article Nr.	Height (m)	Weight (kg)
RFS-12160	0,60	3,6
RFS-12080	0,80	5,3
RFS-12080/32	0,80	3.5



## STEEL LEDGER BEAM LB

Basic horizontal element. Easily attached to the standard with the hooks welded on each side of the beam.

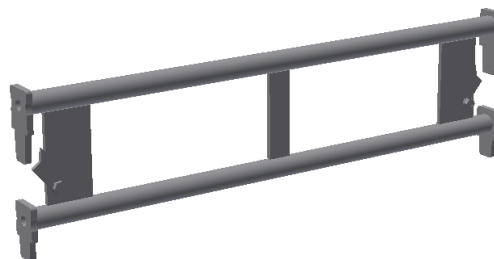
Article Nr.	Dimensions (m)	Weight (kg)
RNS-02161	1,65	11,0
RNS-02190	1,96	12,4
RNS-02245	2,50	14,8
RNS-02300	3,05	17,7
RNS-17305*	3,05	13,4



## STEEL TRANSOM BEAM TB

Steel beam to handle the load of platforms. In contrast to LB, top pipe of the beam is thicker and thus stronger.

Article Nr.	Dimensions (m)	Weight (kg)
RNS-02030	0,35	2,2
RNS-02050	0,56	2,4
RNS-02070	0,77	3,9
RNS-02100	1,05	5,0
RNS-02120	1,25	5,6
RNS-02160	1,65	6,9



## STEEL LEDGER EB

Horizontal beam made of one 48.3mm pipe.

Article Nr.	Dimensions (m)	Weight (kg)
RNS-02001	0,56	4,1
RNS-02002	0,77	5,0
RNS-02003	1,05	5,5
RNS-02004	1,25	7,0
RNS-02005	1,65	7,9
RNS-02006	1,96	10,1
RNS-02007	2,50	12,3
RNS-02008	3,05	14,9



## ALUMINIUM LEDGER BEAM LB

Aluminium beam made in double profile with aluminium wedges on the ends.

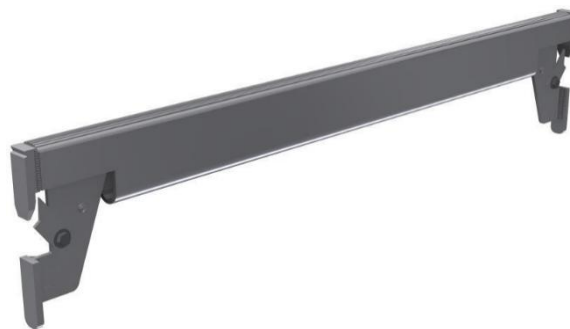
Article Nr.	Dimensions (m)	Weight (kg)
RNA-02030	0,35	1,5
RNA-02050	0,56	2,0
RNA-02070	0,77	2,7
RNA-02100	1,05	3,6
RNA-02120	1,20	4,1
RNA-02160	1,60	5,3
RNA-02190	1,96	6,2
RNA-02245	2,45	8,5
RNA-02300	3,05	9,4



## ALUMINIUM TRANSOM BEAM TB

Platform bearing beam in aluminium.

Article Nr.	Dimensions (m)	Weight (kg)
RNA-02002	0,77	2,9
RNA-02003	1,05	3,2
RNA-02004	1,25	3,6



## ALUMINIUM LEDGER EB

Single profile horizontal aluminium beam.

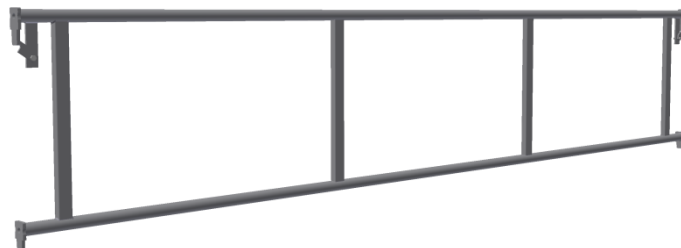
Article Nr.	Dimensions (m)	Weight (kg)
RNA-02010	0,56	1,4
RNA-02011	0,77	1,5
RNA-02012	1,05	1,9
RNA-02013	1,25	2,1
RNA-02014	1,65	2,6
RNA-02015	1,96	3,0
RNA-02016	2,50	3,6
RNA-02017	3,05	4,4



## STEEL DOUBLE GUARDRAIL SKRV

Used for SB standards.

Article Nr.	Dimensions (m)	Weight (kg)
RNS-03050	0,56	4,2
RNS-03070	0,77	5,1
RNS-03100	1,05	7,8
RNS-03120	1,25	8,4
RNS-03160	1,65	9,7
RNS-03190	1,96	11,2
RNS-03230	2,35	11,9
RNS-03245	2,50	12,5
RNS-03300	3,05	14,1



## STEEL DOUBLE GUARDRAIL SKRH

For steel standard SH.

Article Nr.	Dimensions (m)	Weight (kg)
RNS-03051	0,56	4,2
RNS-03071	0,77	5,1
RNS-03101	1,05	7,8
RNS-03121	1,25	8,4
RNS-03161	1,65	9,7
RNS-03191	1,96	11,2
RNS-03231	2,35	11,9
RNS-03246	2,50	12,5
RNS-03301	3,05	14,1



## ALUMINIUM DOUBLE GUARDRAIL RX

Article Nr.	Dimensions (m)	Weight (kg)
RNA-11050	0,56	2,9
RNA-11070	0,77	3,3
RNA-11100	1,05	3,8
RNA-11120	1,25	4,3
RNA-11160	1,65	5,4
RNA-11190	1,96	6,4
RNA-11230	2,35	7,3
RNA-11245	2,50	7,8
RNA-11300	3,05	9,7



## ALUMINIUM DOUBLE GUARDRAIL RXS

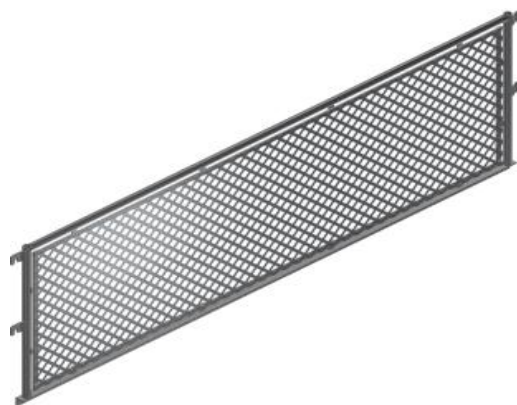
Article Nr.	Dimensions (m)	Weight (kg)
RNA-11050S1	0,56	3,0
RNA-11070S1	0,77	3,4
RNA-11100S1	1,05	3,9
RNA-11120S1	1,25	4,4
RNA-11160S1	1,65	5,4
RNA-11190S1	1,96	6,5
RNA-11230S1	2,35	7,4
RNA-11245S1	2,50	7,9
RNA-11300S1	3,05	9,8



## NET SCREEN SGF

Screen net attached with the hooks to cassettes on standards.

Article Nr.	Dimensions (m)	Weight (kg)
RNS-13070	0,77	5,1
RNS-13100	1,05	7,9
RNS-13120	1,25	8,6
RNS-13160	1,65	9,9
RNS-13190	1,96	11,5
RNS-13245	2,50	12,9
RNS-13300	3,05	14,6



## STEEL DIAGONAL

Ensures stiffness of scaffolding structure. Made of pipe and two screwed half-couplers

Article Nr.	Dimensions (m)	Weight (kg)
RNS-05070	0,77 x 2,00	6,7
RNS-05100	1,05 x 2,00	8,5
RNS-05120	1,25 x 2,00	9,1
RNS-05160	1,65 x 2,00	10,0
RNS-05190	1,96 x 2,00	10,5
RNS-05245	2,50 x 2,00	12,2
RNS-05300	3,05 x 2,00	14,2



## ALUMINIUM DIAGONAL

Aluminium version of diagonal. Is made of profile with two screwed half-couplers

Article Nr.	Dimensions (m)	Weight (kg)
RNA-01070	0,77 x 2,00	3,5
RNA-01100	1,05 x 2,00	3,9
RNA-01120	1,25 x 2,00	4,2
RNA-01160	1,65 x 2,00	4,5
RNA-01190	1,96 x 2,00	5,0
RNA-01245	2,50 x 2,00	5,6
RNA-01300	3,05 x 2,00	6,3



## OVERLAY STANDARD

An additional standard that is placed on top of horizontal beam to create a passage on scaffolding field.

Article Nr.	Dimensions (m)	Weight (kg)
RNS-04001	1,00	5,8

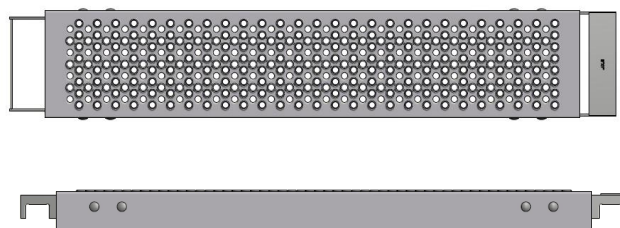


## ALUMINIUM DECK 0,23

Class 6 (6 kN/m<sup>2</sup>) for lengths from 0,56 to 2,50m.

Class 5 (4,5 kN/m<sup>2</sup>) for length 3,05m.

Article Nr.	Dimensions (m)	Weight (kg)
RNA-05055	0,56	4,8
RNA-05077	0,77	5,0
RNA-05105	1,05	6,0
RNA-05125	1,25	6,7
RNA-05165	1,65	8,1
RNA-05196	1,96	9,2
RNA-05250	2,50	11,1
RNA-05305	3,05	13,0

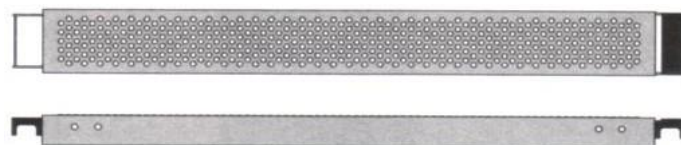


## ALUMINIUM DECK 0,17

Class 6 (6 kN/m<sup>2</sup>) for lengths from 0,56 to 2,50m.

Class 5 (4,5 kN/m<sup>2</sup>) for length 3,05m.

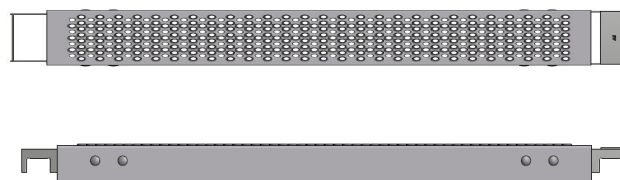
Article Nr.	Dimensions (m)	Weight (kg)
RNA-06055	0,56	3,4
RNA-06077	0,77	3,9
RNA-06105	1,05	4,4
RNA-06125	1,25	5,2
RNA-06165	1,65	5,9
RNA-06196	1,96	8,3
RNA-06250	2,50	9,0
RNA-06305	3,05	11,0



## ALUMINIUM DECK 0,10

Class 6 (6 kN/m<sup>2</sup>) for all lengths.

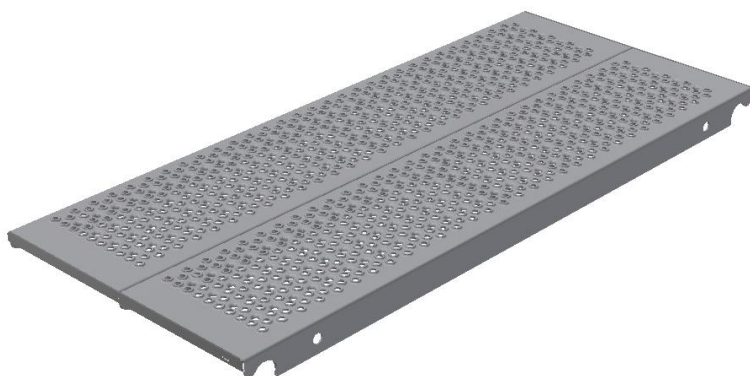
Article Nr.	Dimensions (m)	Weight (kg)
RNA-10055	0,56	3,3
RNA-10077	0,77	3,6
RNA-10105	1,05	4,1
RNA-10125	1,25	5,0
RNA-10165	1,65	5,4
RNA-10196	1,96	7,6
RNA-10250	2,50	8,1
RNA-10305	3,05	9,9



## ALUMINIUM LABANK

Class 6 (6 kN/m<sup>2</sup>) for all the dimensions.

Article Nr.	Dimensions (m)	Weight (kg)
RNA-16495	1,65 x 0,495	9,1
RNA-12495	1,25 x 0,495	7,0
RNA-16595	1,65 x 0,595	10,8
RNA-12595	1,25 x 0,595	8,2

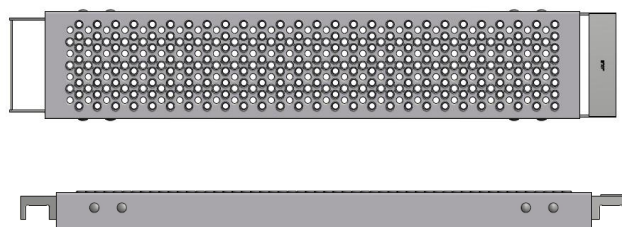


## STEEL DECK 0,23

Class 6 (6 kN/m<sup>2</sup>) for lengths from 0,56 to 2,50m.

Class 5 (4,5 kN/m<sup>2</sup>) for length 3,05m.

Article Nr.	Dimensions (m)	Weight (kg)
RNS-08055	0,56	5,8
RNS-08077	0,77	7,6
RNS-08105	1,05	9,0
RNS-08125	1,25	10,5
RNS-08165	1,65	12,9
RNS-08196	1,96	15,3
RNS-08250	2,50	17,4
RNS-08305	3,05	22,5

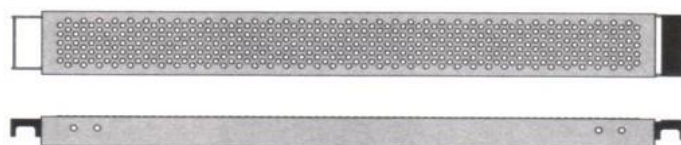


## STEEL DECK 0,17

Class 6 (6 kN/m<sup>2</sup>) for lengths from 0,56 to 2,50m.

Class 5 (4,5 kN/m<sup>2</sup>) for length 3,05m.

Article Nr.	Dimensions (m)	Weight (kg)
RNS-09055	0,56	5,5
RNS-09077	0,77	6,5
RNS-09105	1,05	8,1
RNS-09125	1,25	9,3
RNS-09165	1,65	11,6
RNS-09196	1,96	13,5
RNS-09250	2,50	16,2
RNS-09305	3,05	19,6

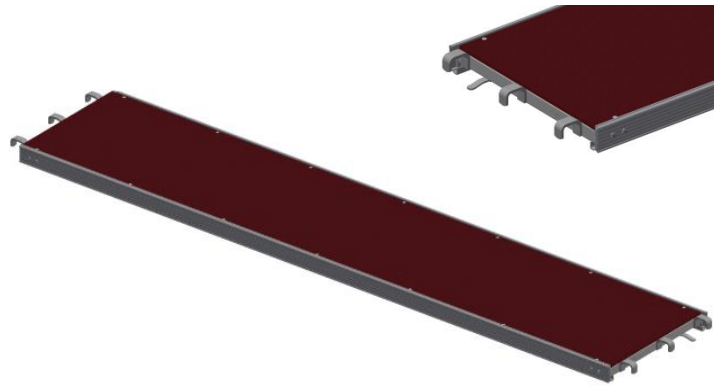


## ALUMINIUM DECK 0,61

Frame of the deck is made of aluminium profile.  
The surface could be produced of non-slip plywood.

Load class 3 (2kN/m<sup>2</sup>)

Article Nr.	Dimensions (m)	Weight (kg)
RNA-61165N	1,65 x 0,61	16,3
RNA-61196N	1,96 x 0,61	19,5
RNA-61250N	2,50 x 0,61	22,4
RNA-61305N	3,05 x 0,61	25,4



## ALUMINIUM ACCESS DECK 0,61 WITH LADDER

Aluminium deck with access ladder for floor communication. Surface produced of non-slip plywood panel.

Article Nr.	Dimensions (m)	Weight (kg)
RNA-60250N	2,50 x 0,61	26,8
RNA-60305N	3,05 x 0,61	29,7



## ALUMINIUM ACCESS DECK 0,61 WITHOUT LADDER

Aluminium access deck without ladder for floor communication. Require an additional ladder.  
Surface is produced of non-slip plywood panel.

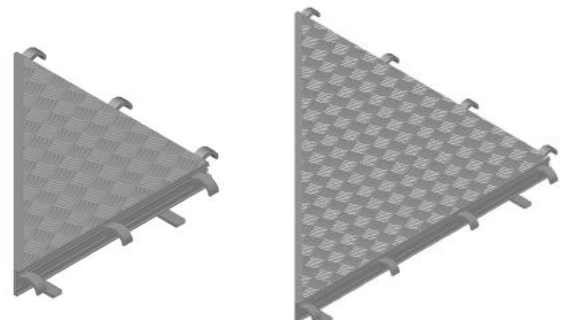
Article Nr.	Dimensions (m)	Weight (kg)
RNA-62165N	1,65 x 0,61	16,3
RNA-62196N	1,96 x 0,61	19,5
RNA-62250N	2,50 x 0,61	22,4
RNA-62305N	3,05 x 0,61	25,4



## TRIANGULAR ALUMINIUM DECK

A more reliable and safer solution for scaffolding corners than wooden planks

Article Nr.	Dimensions (m)	Weight (kg)
RNA-00070	0,70 x 0,70	5,2
RNA-00120	1,20 x 1,20	11,2



## DECK LIFT-OFF PROTECTION

Universal solution to fix decks on ledgers and prevent deck lift-off

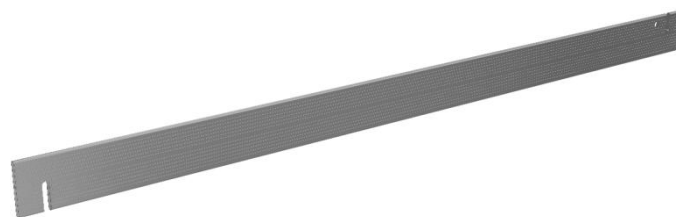
Article Nr.	Dimensions (m)	Weight (kg)
RNS-00070	0,77	1,1
RNS-00100	1,05	1,5
RNS-00120	1,25	1,7
RNS-00160	1,65	2,2
RNS-00190	1,96	2,6
RNS-00250	2,50	3,2
RNS-00300	3,05	3,9



## ALUMINIUM TOE BOARD

Fire resistant toe board made of aluminium profile.

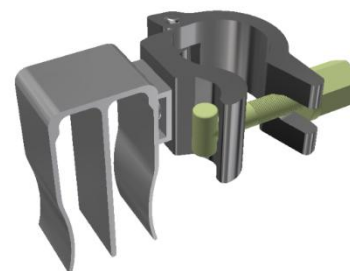
Article Nr.	Dimensions (m)	Weight (kg)
RNA-07007	0,70	1,7
RNA-07010	1,00	2,2
RNA-07012	1,20	2,7
RNA-07016	1,60	3,5
RNA-07019	1,96	4,1
RNA-07025	2,50	5,4
RNA-07030	3,05	6,5



## TOE BOARD COUPLER

Used to connect toe boards to standard and to each other.

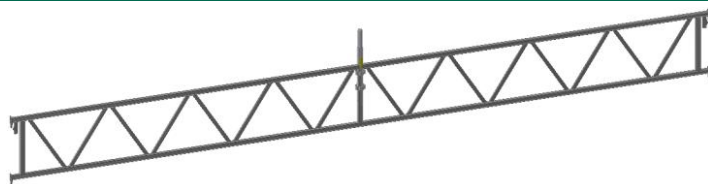
Article Nr.	Type	Weight (kg)
RNA-07000	-	0,8



## GATE BEAM

Beam with hooks to attach to the standards. One beam is able to handle two 3,05m fields.

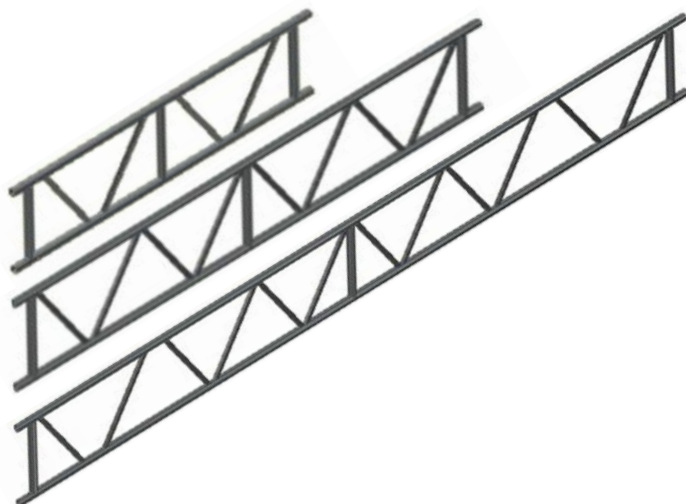
Article Nr.	Dimensions (m)	Weight (kg)
RNS-40610	6,10	59,1



## STEEL LATTICE BEAM

Beams are used to make hanging platforms or a passage under scaffolding structure.

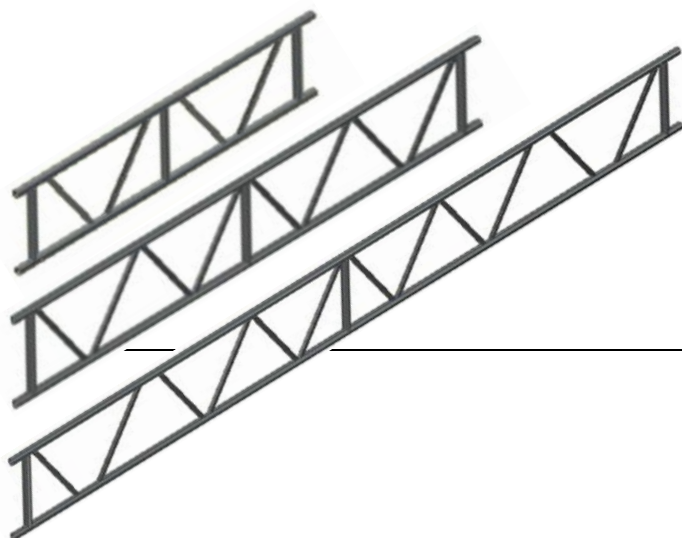
Article Nr.	Dimensions (m)	Weight (kg)
RFS-05324	3,24 x 0,50	35,5
RFS-05424	4,24 x 0,50	45,5
RFS-05524	5,24 x 0,50	54,5
RFS-05624	6,24 x 0,50	64,0



## ALUMINIUM LATTICE BEAM

A lighter alternative to steel beams. Faster to handle, assemble and disassemble

Article Nr.	Dimensions (m)	Weight (kg)
RFA-05324	3,24 x 0,50	14,2
RFA-05424	4,24 x 0,50	18,8
RFA-05524	5,24 x 0,50	22,6
RFA-05624	6,24 x 0,50	26,4
RFA-05824	8,24 x 0,50	34,4



## LATTICE BEAM CONNECTOR

Used with aluminium lattice beams. Allows to connect beams of various lengths

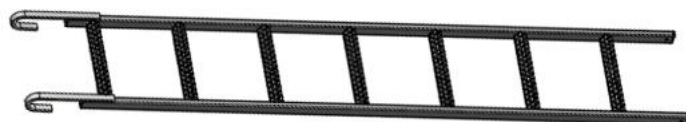
Article Nr.	Dimensions (m)	Weight (kg)
RFA-05001	0,4	2,1



## ACCESS LADDER

Ladder with perforated steps.

Article Nr.	Dimensions (m)	Weight (kg)
RNS-01021	2,15	10,6



## INITIAL STAIRWAY

Provides convenient access to the lower level of scaffolding or a communication between two structures with various heights.

\*Steps are made of perforated sheet

Article Nr.	Dimensions (m)	Weight (kg)
RNA-35100N	0,64 x 1,00	14,2
RNA-30100N*	0,64 x 1,00	14,3



## STEEL/ALUMINIUM STAIRS

RNS – steel version

RNA- aluminium version

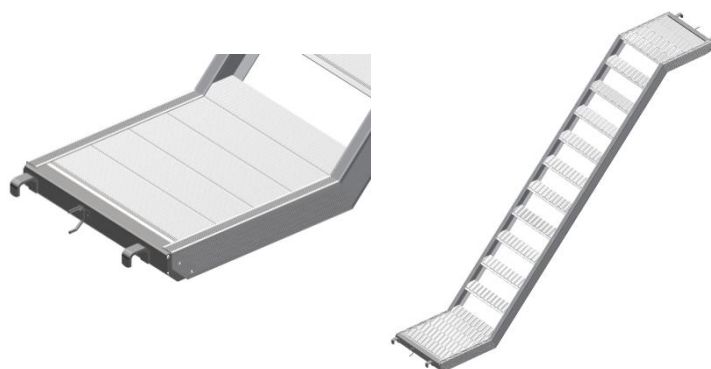
Article Nr.	Dimensions (m)	Weight (kg)
RNS-01002	1,20 x 2,00	30,9
RNS-01006	1,60 x 2,00	34,5
RNA-00002	1,20 x 2,00	11,8
RNA-00001	1,60 x 2,00	11,9



## ALUMINIUM STAIRWAY, PROFILE STEPS

Convenient access to the scaffolding and material transportation.

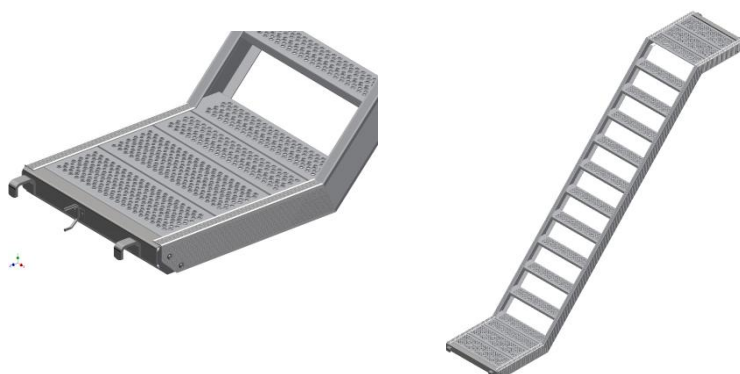
Article Nr.	Dimensions (m)	Weight (kg)
RNA-35250N	2,50 x 2,00	27,5
RNA-35305N	3,05 x 2,00	30,0



## ALUMINIUM STAIRWAY, PERFORATED STEPS

Perforation's slip resistance adds additional safety, especially for temperatures below 0.

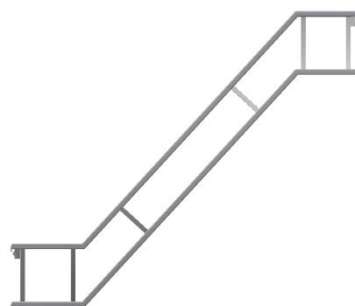
Article Nr.	Dimensions (m)	Weight (kg)
RNA-30250N	2,50 x 2,00	28,0
RNA-30305N	3,05 x 2,00	31.5



## STAIRWAY GUARDRAIL

Ensures safety on the stairways.

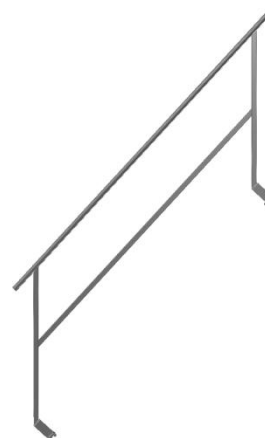
Article Nr.	Dimensions (m)	Weight (kg)
RNA-31250	2,50 x 2,00	10,2
RNA-31305	3,05 x 2,00	11,2



## INTERNAL STAIRWAY GUARDRAIL

Ensures safety on the internal side of stairway.

Article Nr.	Dimensions (m)	Weight (kg)
RFS-32001	-	12,0



## STAIRCASE ENTRANCE STEP

In initial step for the staircase, Is mounted on standard with hooks.

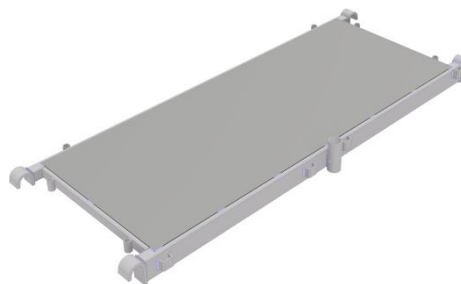
Article Nr.	Dimensions (m)	Weight (kg)
RNS-00002	1,65	1,7
RNS-00007	0,77	1,0



## LANDING PLATFORM

Platform for intermediate staircase floors. Is put on top of beams. Has attachments for stairs' hooks.

Article Nr.	Dimensions (m)	Weight (kg)
RNS-00001	1,65 x 0,63	23,5
RNA-00011	1,65 x 0,63	16,2
RNA-00012	1,65 x 0,63	15,5



## STAIRCASE STAIRS

Stairs with perforated steps. Produced either in steel or aluminium.

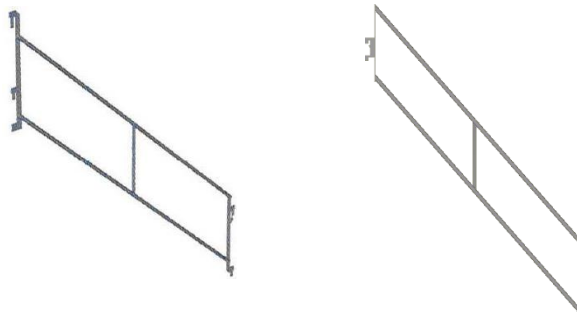
Article Nr.	Height (m)	Weight (kg)
RNS-01150	1,50	38,5
RNS-01200	2,00	40,0
RNA-00004	1,50	21,2
RNA-00005	2,00	28,2



## STAIRCASE GUARDRAIL

Guardrails mounted on standards suitable for respective stairs dimensions. Produced in steel for both versions of staircases.

Article Nr.	Dimensions (m)	Weight (kg)
RNS-03002	1,50	10,5
RNS-03001	2,00	12,7
RNA-03002	1,50	10,5
RNA-03001	2,00	12,7



## GUARDRAIL RACK

Ensures safety on the internal side of stairway.

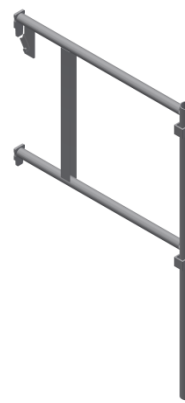
Article Nr.	Dimensions (m)	Weight (kg)
RNS-04002	1,0	5,3



## TOP FLOOR GUARDRAIL

Ensures safety on the internal side of stairway.

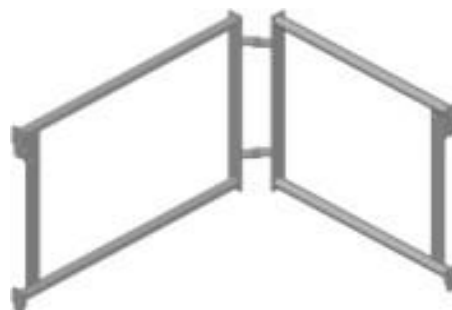
Article Nr.	Dimensions (m)	Weight (kg)
RNS-04003	-	7,7



## FOLDABLE GUARDRAIL

Foldable guardrail limits the passage to an unsecured part of a landing platform.

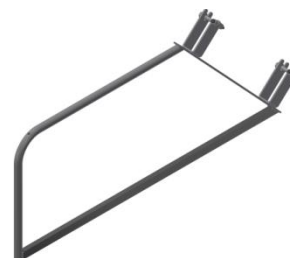
Article Nr.	Dimensions (m)	Weight (kg)
RNS-03003	-	9,4



## STAIRWELL GUARDRAIL

Ensures safety on staircases for fall protection.

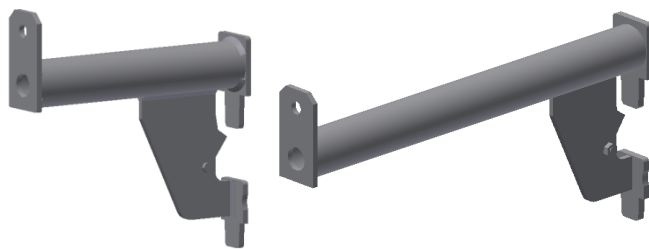
Article Nr.	Dimensions (m)	Weight (kg)
RFS-32002	-	5,5



## STEEL CONSOLE BRACKET

Class 6 to class 4, depending on the length.

Article Nr.	Dimensions (m)	Weight (kg)
RNS-06008	0,25	2,1
RNS-06009	0,36	2,9
RNS-06006	0,47	3,0



## STEEL REINFORCED CONSOLE BRACKET

Load class 3 (2kN/m<sup>2</sup>)

Article Nr.	Dimensions (m)	Weight (kg)
RNS-06004	0,50	6,3
RNS-06005	0,70	7,5



## ALUMINIUM CONSOLE BRACKET

Class 6 to class 4, depending on the length.

Article Nr.	Dimensions (m)	Weight (kg)
RNA-06023	0,25	0,7
RNA-06007	0,30	0,8
RNA-06040	0,40	0,9



## ALUMINIUM REINFORCED CONSOLE BRACKET

Load class 3 (2kN/m<sup>2</sup>)

Article Nr.	Dimensions (m)	Weight (kg)
RNA-06004	0,50	2,6
RNA-06005	0,70	3,3



## LEDGER RIDER

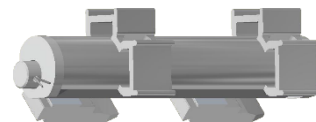
Movable attachment for beams or standards.

Article Nr.	Type	Weight (kg)
RNA-47310	BRH	2,9
RNA-47320	BRV	2,6
RNA-47330	Post	2,8



## ROTATIONAL FITTING

Allows to rotate scaffolding fields for bended walls or structures.



Article Nr.	Dimensions (m)	Weight (kg)
RNA-47340	-	1,5

## ALUMINIUM CANTILEVER BRACKET

Bracket is attached to a standard with the help of half-coupler. Additionally secured with beam's security pin.

Article Nr.	Dimensions (m)	Weight (kg)
RNA-06003	1,25	6,6



## STEEL ROOF CONSOLE

Weather protection solution for top scaffolding floor. Is attached to the standard with two welded couplers.

Article Nr.	Dimensions (m)	Weight (kg)
RNS-04740	-	12,6



## PROTECTIVE ROOF CONSOLE

Used to secure pedestrians from potential fall of objects from scaffolding. Is put on top of 0,7m console.

Article Nr.	Dimensions (m)	Weight (kg)
RFS-14073	0,7	5,9



## WALL TIE

Ensures safe anchoring of scaffolding structure to the walls.

Article Nr.	Dimensions (m)	Weight (kg)
RFS-17040	0,40	1,7
RFS-17050	0,50	2,0
RFS-17085	0,85	3,1
RFS-17110	1,10	4,8
RFS-17130	1,30	4,9



## EYE BOLT

Is screwed into the wall to attach wall tie to.

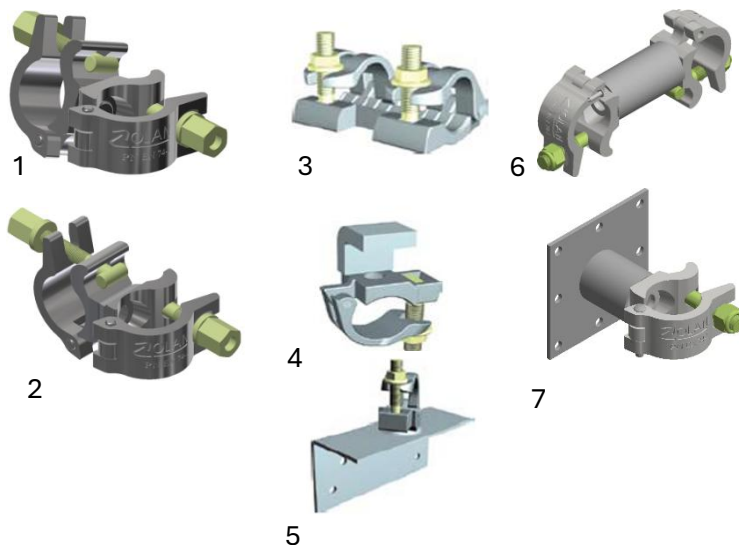
Article Nr.	Dimensions (m)	Weight (kg)
ZSR-0120	0,12	0,1
ZSR-00300	0,30	0,3



## COUPLERS

We provide a wide range of couplers for any need there could be on a scaffolding site.

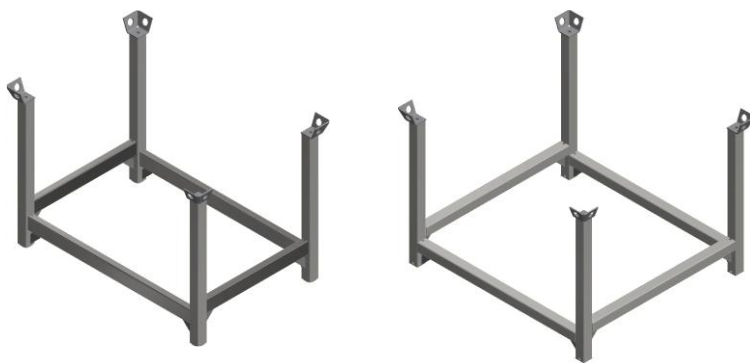
	Article Nr.	Type	Weight (kg)
1	ZNN-ZB01CH	Swivel	1,0
2	ZNN-ZB02CH	Rigid	0,8
3	ZNN-07049	Sleeve	1,5
4	ZNN-07030	Hook	1,0
5	ZNN-07200	Angle bracket	1,7
6	RSR-22001	Distance	1,8
7	RSR-22053	Wall-coupler	1,2



## MODULAR PALETTE

Used for easy transportation and storage of scaffolding elements.

Article Nr.	Dimensions (m)	Weight (kg)
RFS-61280	1,20 x 0,80	31,4
RFS-61290	1,20 x 0,90	31,9
RFS-61211	1,20 x 1,10	33,5



## MODULAR BOX

An effective solution to store small elements like base jacks or couplers.

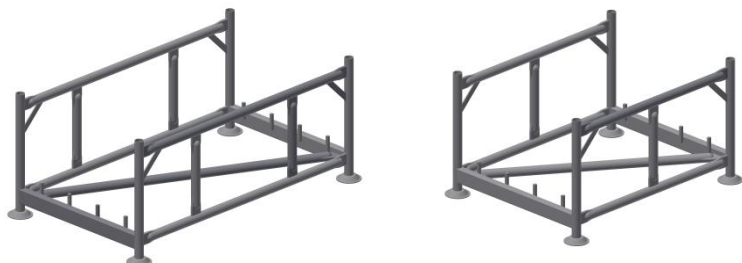
Article Nr.	Dimensions (m)	Weight (kg)
RFS-61281A	1,20 x 0,80	58,5
RFS-61281B	1,20 x 0,80	60,0



## MODULAR TUBE PALETTE

Storage solution for FOX scaffolding. Up to 5 pallets can be stacked on each other.

Article Nr.	Dimensions (m)	Weight (kg)
RNS-07110	1,10 x 0,85	46,5
RNS-07150	1,50 x 0,85	57,0



## MODULAR PROFILE PALETTE

Storage solution for scaffolding elements. Made of 50x50cm profile. Does not have lifting hooks.

Article Nr.	Dimensions (m)	Weight (kg)
RNS-07113	1,15 x 0,75	35,5

