



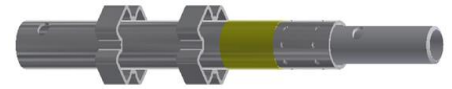
Modular scaffolding Steelfox



DVS ZERT DVS ZERT DVS ZERT DVS ZERT DVS ZERT

1. Standard SH

Article no	Dimensions [m]	Weight [kg]
RNS-04300	3,0	16,5
RNS-04200	2,0	11,2
RNS-04150	1,5	8,3
RNS-04100	1,0	6,0
RNS-04050	0,5	3,1

**2. Standard SB**

Article no	Dimensions [m]	Weight [kg]
RNS-04011	3,0	17,4
RNS-04012	2,0	12,0
RNS-04013	1,5	9,4
RNS-04014	1,0	6,5
RNS-04015	0,5	4,0

**3. Base jack**

Article no	Dimensions [m]	Weight [kg]
RFS-12160	0,6	5,26

**4. Locking pin**

Article no	Dimensions [m]	Weight [kg]
RNA-03000.4	Fi16	0,2

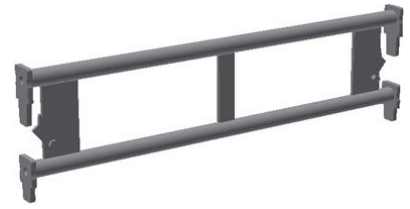
**5. Ledger beam**

Article no	Dimensions [m]	Weight [kg]
RNS-02300	3,05	18,5
RNS-02245	2,5	15,6
RNS-02190	1,96	11,6
RNS-02161	1,65	9,3



6. Transom beam TB

Article no	Dimensions [m]	Weight [kg]
RNS-02160	1,65	7,3
RNS-02120	1,25	5,6
RNS-02100	1,05	5,0
RNS-02070	0,77	3,9
RNS-02050	0,564	2,9
RNS-02030	0,35	2,1

**7. Single Ledger EB**

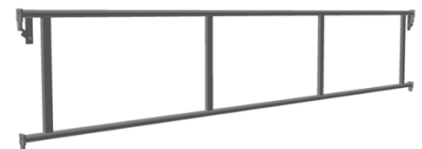
Article no	Dimensions [m]	Weight [kg]
RNS-02008	3,05	14,9
RNS-02007	2,5	12,3
RNS-02006	1,96	10,1
RNS-02005	1,65	7,9
RNS-02004	1,25	7,0
RNS-02003	1,05	5,5
RNS-02002	0,77	5,0
RNS-02001	0,564	4,1

**8. Double braced steel girder LBL 3.05m**

Article no	Dimensions [m]	Weight [kg]
RNS-17305	3,05	13,40

**9. Double rail SKRV**

Article no	Dimensions [m]	Weight [kg]
RNS-03300	3,05	14,1
RNS-03245	2,5	12,5
RNS-03230	2,35	11,9
RNS-03196	1,96	11,2
RNS-03160	1,65	9,7
RNS-03120	1,25	8,4
RNS-03100	1,05	7,8
RNS-03072	0,77	5,1
RNS-03050	0,564	4,2

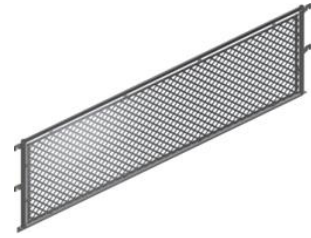
**10. Double rail SKRH for SH stands**

Article no	Dimensions [m]	Weight [kg]
RNS-03301	3,05	14,6
RNS-03246	2,5	12,9
RNS-03231	2,35	12,3
RNS-03197	1,96	11,5
RNS-03161	1,65	9,9
RNS-03121	1,25	8,6
RNS-03101	1,05	7,9
RNS-03073	0,77	5,1
RNS-03051	0,564	4,2



11. Net screen

Article no	Dimensions [m]	Weight [kg]
RNS-13300	3,05	14,6
RNS-13245	2,5	12,9
RNS-13190	1,96	11,5
RNS-13160	1,65	9,9
RNS-13120	1,25	8,6
RNS-13100	1,05	7,9
RNS-13070	0,77	5,1

**12. Diagonal bracing**

Article no	Dimensions [m]	Weight [kg]
RNS-05300	3,05x2,0	14,2
RNS-05245	2,50x2,0	12,2
RNS-05190	1,96x2,0	10,5
RNS-05160	1,65x2,0	10,0
RNS-05120	1,25x2,0	9,1
RNS-05100	1,05x2,0	8,5
RNS-05070	0,77x2,0	6,7

**13. Wall tie**

Permissible load: 2,5kN

Article no	Dimensions [m]	Weight [kg]
RFS-17300	3,0	9,3
RFS-17130	1,3	4,1
RFS-17085	0,85	2,8
RFS-17040	0,4	1,45

**14. Aluminum plank 0,23**

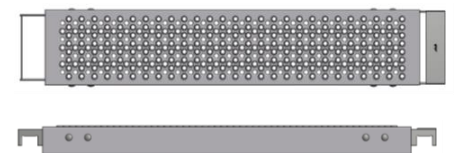
m

Permissible load:

L=0,56-2,50 = class 6 6kN/m²

L=3,05 = class 5 4,5kN/m²

Article no	Dimensions [m]	Weight [kg]
RNA-05305	3,05	13,02
RNA-05250	2,50	11,09
RNA-05196	1,96	9,2
RNA-05165	1,65	8,12
RNA-05125	1,25	6,69
RNA-05105	1,05	5,99
RNA-05077	0,77	5,01
RNA-05055	0,564	4,76



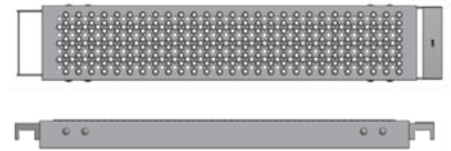
15. Aluminum plank 0,17 m

Permissible load:

L=0,56-2,50 = class 6 6kN/m²

L=3,05 = class 5 4,5kN/m²

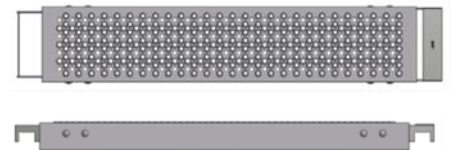
Article no	Dimensions [m]	Weight [kg]
RNA-06305	3,05	11,00
RNA-06250	2,50	8,95
RNA-06196	1,96	8,3
RNA-06165	1,65	5,9
RNA-06125	1,25	5,2
RNA-06105	1,05	4,4
RNA-06077	0,77	3,9
RNA-06055	0,564	3,4



16. Aluminum plank 0,10 m

Permissible load: class 6 6kN/m²

Article no	Dimensions [m]	Weight [kg]
RNA-10305	3,05	9,87
RNA-10250	2,50	8,12
RNA-10196	1,96	7,63
RNA-10165	1,65	5,4
RNA-10125	1,25	4,95
RNA-10105	1,05	4,1
RNA-10077	0,77	3,6
RNA-10055	0,564	3,3



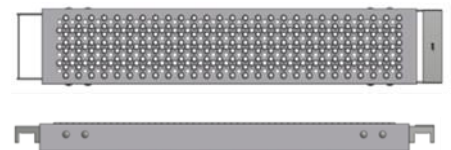
17. Steel plank 0,23 m

Permissible load:

L=0,56-2,50 = class 6 6kN/m²

L=3,05 = class 5 4,5kN/m²

Article no	Dimensions [m]	Weight [kg]
RNS-08305	3,05	22,5
RNS-08250	2,50	17,4
RNS-08196	1,96	15,3
RNS-08165	1,65	12,9
RNS-08125	1,25	10,5
RNS-08105	1,05	9,0
RNS-08077	0,77	7,6
RNS-08055	0,564	5,8



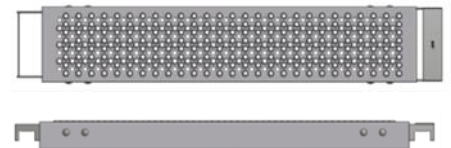
18. Steel plank 0,17 m

Permissible load:

L=0,56-2,50 = class 6 6kN/m²

L=3,05 = class 5 4,5kN/m²

Article no	Dimensions [m]	Weight [kg]
RNS-09305	3,05	19,6
RNS-09250	2,50	16,2
RNS-09196	1,96	13,5
RNS-09165	1,65	11,6
RNS-09125	1,25	9,3
RNS-09105	1,05	8,1
RNS-09077	0,77	6,5
RNS-09055	0,564	5,5



19. Steel plank 0,32 m

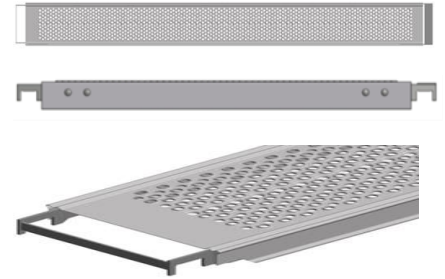
Permissible load:

L=0,56-1,96 = class 6 6,0kN/m²

L=2,50 = class 5 4,5kN/m²

L=3,05 = class 4 3,0kN/m²

Article no	Dimensions [m]	Weight [kg]
RNS-33305	3,05	
RNS-33250	2,50	
RNS-33196	1,96	
RNS-33165	1,65	
RNS-33125	1,25	
RNS-33105	1,05	
RNS-33077	0,77	
RNS-33055	0,564	



20. Aluminum - plywood access plank 0,61 m with ladder and hooks

Permissible load: class 3 2kN

Article no	Dimensions [m]	Weight [kg]
RNA-60305N	3,05	29,7
RNA-60250	2,50	26,8



21. Aluminum-plywood access plank 0,61m with hooks

Permissible load: class 3 2kN/m²

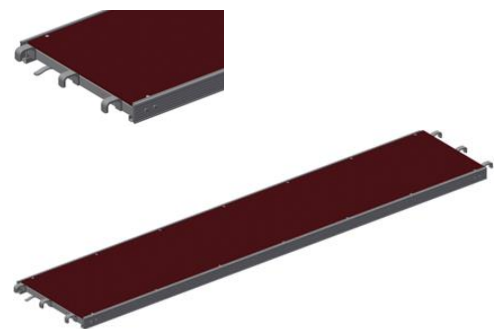
Article no	Dimensions [m]	Weight [kg]
RNA-62305N	3,05	25,4
RNA-62250	2,50	22,4
RNA-62196	1,96	19,5
RNA-62165	1,65	16,3



22. Aluminum - plywood plank with hooks

Permissible load: class 3 2kN/m²

Article no	Dimensions [m]	Weight [kg]
RNA-61305N	3,05	23,7
RNA-61250	2,50	20,5
RNA-61196	1,96	16,0
RNA-61165	1,65	15,1



23. Double aluminum plank 0,495 m

Permissible load: class 3 2kN/m² 6
6,0kN/m²

Article no	Dimensions [m]	Weight [kg]
RNA-16495/3.0	1,65x0,495	10,2
RNA-12495/3.0	1,25x0,495	7,7
RNA-16495/2.5	1,65x0,495	9,1
RNA-12495/2.5	1,25x0,495	7,0



24. Double aluminum plank 0,595 m

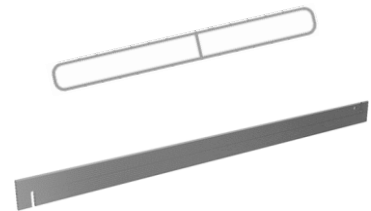
Permissible load: class 3 2kN/m² 6
6,0 kN/m²

Article no	Dimensions [m]	Weight [kg]
RNA-16595/3.0	1,65x0,595	13,1
RNA-12595/3.0	1,25x0,595	9,8
RNA-16595/2.5	1,25x0,595	10,82
RNA-12595/2.5	1,25x0,595	8,2



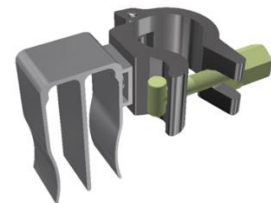
25. Toeboard

Article no	Dimensions [m]	Weight [kg]
RNA-07030	3,050	6,63
RNA-07025	2,500	5,45
RNA-07019	1,964	4,31
RNA-07016	1,655	3,64
RNA-07012	1,250	2,78
RNA-07010	1,050	2,35
RNA-07007	0,770	1,75
RNA-07005	0,564	0,84



26. Toeboard clamp

Article no	Dimensions [m]	Weight [kg]
RNA-07000	--	0,84



27. Steel stairs 2,0 m

Article no	Dimensions [m]	Weight [kg]
RNS-01002	1,2	30,9
RNS-01006	1,6	34,5

**28. Bracket SK**

Article no	Dimensions [m]	Weight [kg]	Klasa
RNS-06008	0,245	2,1	6
RNS-06009	0,36	2,9	5
RNS-06006	0,47	3,0	3

**29. Supporting reinforced SK bracket**

Article no	Dimensions [m]	Weight [kg]	Klasa
RNS-06004	0,5	6,3	3
RNS-06005	0,7	7,5	3

**30. Roof protection console**

Article no	Dimensions [m]	Weight [kg]
RNS-14070	0,7	5,9



31. Steel ladder

Article no	Dimensions [m]	Weight [kg]
RNS-01021	0,34x2,15	9,85

**32. Entrance step**

Article no	Dimensions [m]	Weight [kg]
RNS-00002	1,6	1,7

**33. Landing**

Article no	Dimensions [m]	Weight [kg]
RNS-00001	2,0x0,65	23,5

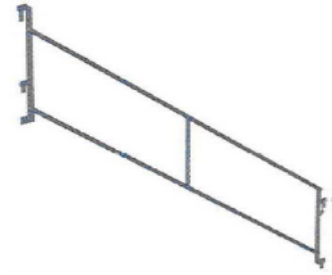
**34. Steel stairs**

Article no	Dimensions [m]	Weight [kg]
RNS-01200	2,0	43,9
RNS-01150	1,5	34



35. Stair handrail

Article no	Dimensions [m]	Weight [kg]
RNS-03001	2,0	10,3
RNS-03002	1,5	9,0



36. Handrail post

Article no	Dimensions [m]	Weight [kg]
RNS-04002	1,0	5,3



37. Top guard frame

Article no	Dimensions [m]	Weight [kg]
RNS-04003	--	7,7



38. Guardrail post

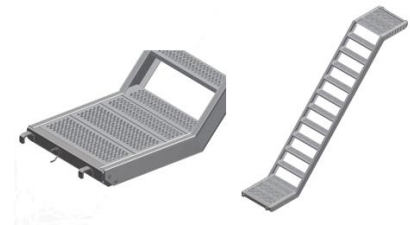
Article no	Dimensions [m]	Weight [kg]
RNS-04001	1,0	5,8



39. Aluminum stairs*

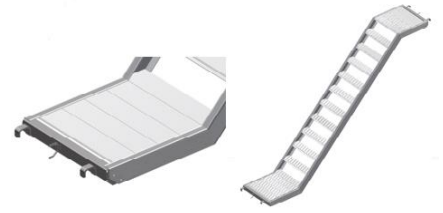
*make of perforated sheet

Article no	Dimensions [m]	Weight [kg]
RNA-30305	3,05	31,5
RNA-30250	2,5	28

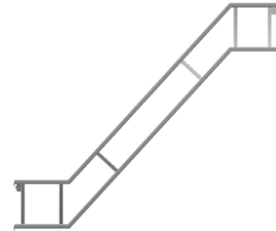


40. Aluminum stairs

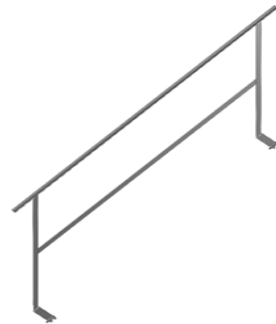
Article no	Dimensions [m]	Weight [kg]
RNA-35305	3,05	30
RNA-35250	2,5	27,5

**41. Stairs handrail**

Article no	Dimensions [m]	Weight [kg]
RNA-31305	3,05	11,5
RNA-31250	2,5	10,2

**42. Stairs handrail**

Article no	Dimensions [m]	Weight [kg]
RFS-32001	---	12

**43. Lattice beam FBB**

Article no	Dimensions [m]	Weight [kg]
RNS-406100	6100	59,1

**44. Normal coupler**

Article no	Dimensions [m]	Weight [kg]
ZNN-ZB02CH	---	0,8



45. Swivel coupler

Article no	Dimensions [m]	Weight [kg]
ZNN-ZB01CH	---	1,0



46. Modular pallet

Pallet is used for easy transportation and storage of scaffolding elements.

*STORAGE PACKAGE REINFORCED

Article no	Dimensions [m]	Weight [kg]
RFS-61280	1,2 x 0,8x 0,8	26,8
RFS-61282	1,2x 0,8 x 0,9	28,5
RFS-61290	1,2 x 0,9	40,0
RFS-60566*	1,2 x 0,9	47,4
RFS-61211	1,2x1,1,1x0,94	34,00



47. Modular box*

*A possible option with a galvanized steel insert

Article no	Dimensions [m]	Weight [kg]
RFS-61281	0,8 x 1,2	58

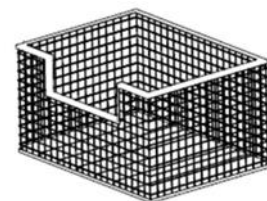


48. Net pallet with wooden insert

It is used for storing and transporting small scaffolding elements. Mounted in a modular pallet. Sold in a set with a wooden floor*

* A possible option with a galvanized steel insert

Article no	Dimensions [m]	Weight [kg]
RFS-60567	1,08 x 0,68	30,4



49. Modular pallet

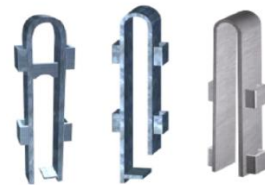
Article no	Dimensions [m]	Weight [kg]
RNS-07110B	1.1	46,5
RNS-07150B	1.5	57

**50. Adjustable bracket**

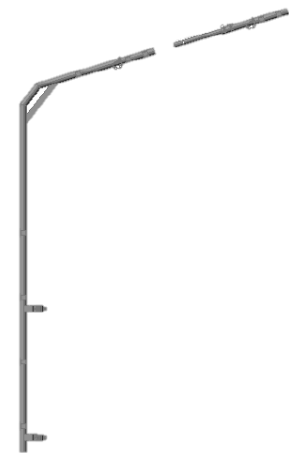
Article no	Dimensions [m]	Weight [kg]
RNS-06002	-----	3,80
RNS-06012	-----	5,90

**51. Beam rider**

Article no	Dimensions [m]	Weight [kg]
RNS-47310	-----	2,9
RNS-47320	-----	2,6
RNS-47330	-----	2,8

**52. Roofbend with extension**

Article no	Dimensions [m]	Weight [kg]
RNS-04740	-----	23,00

**53. Aluminum stairs***

*make of perforated sheet

Article no	Dimensions [m]	Weight [kg]
RNA-30100	1,0x0,64	14,25



54. Aluminum stairs*

* from a special profile

Article no	Dimensions [m]	Weight [kg]
RNA-35100	1,0x0,64	14,15



55. Folding storage pallet

Article no	Dimensions [m]	Weight [kg]
RFS-61285	1250x850x275	35,50



56. Storage pallet 110x70

Article no	Dimensions [m]	Weight [kg]
RNS-07113	110x70x55 [50X50X3]	31,00



update on 04/08/2020

 **OLAN** SP. Z O.O.

Żabokliki, ul. Korczewska57

08-110 Siedlce

tel. + 48 25 631 03 30

fax. + 48 633 14 16

e-mail: info@olan.siedlce.pl

[WWW. OLAN.SIEDLCE.PL](http://WWW.OLAN.SIEDLCE.PL)